

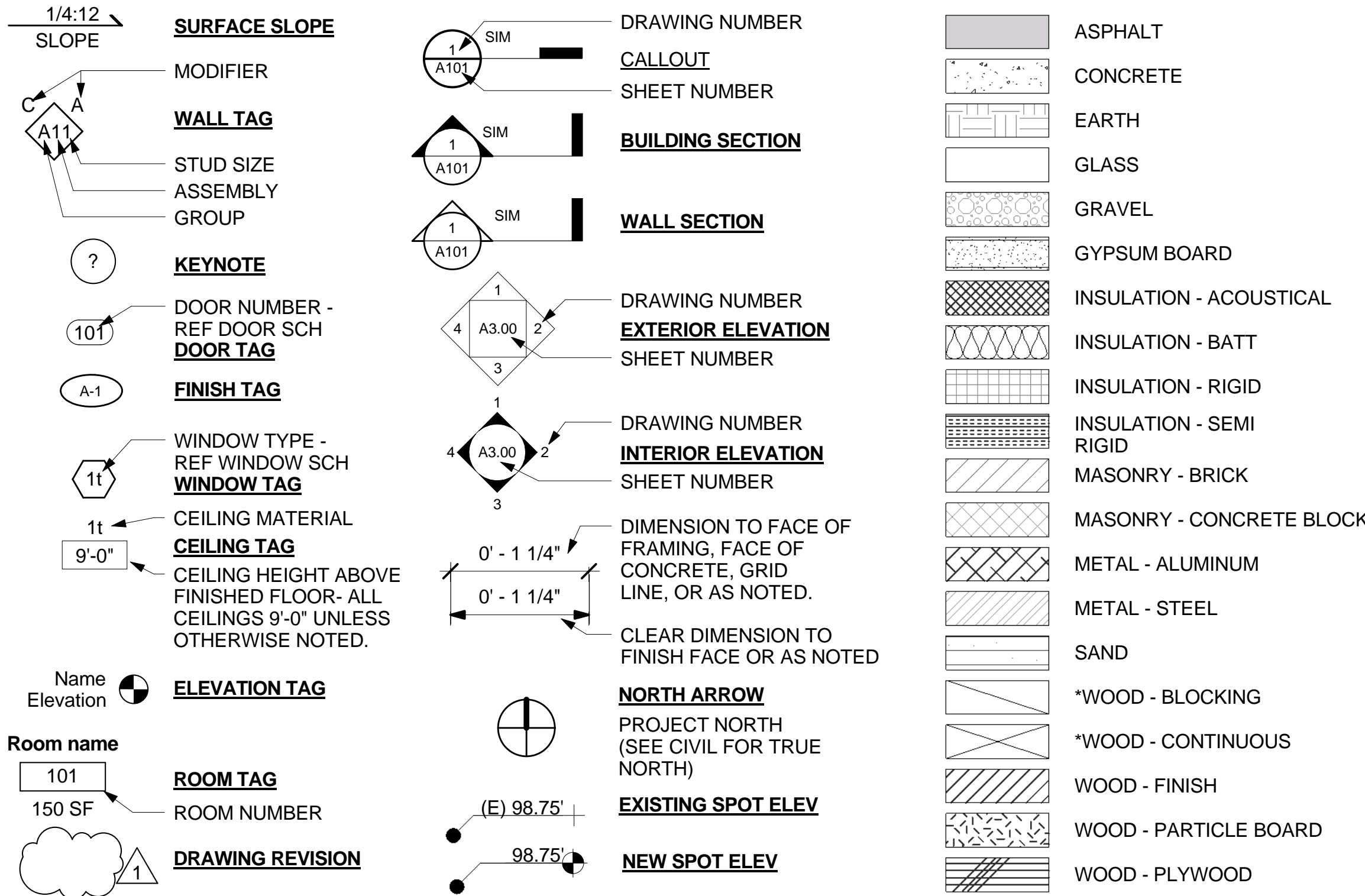
# Wallowa Memorial Hospital MOB

## Wallowa County Health Care District

### Enterprise, OR

# SITE SURCHARGE PACKAGE

#### SYMBOLS AND FILL PATTERNS



#### ABBREVIATIONS

---	NONE	EQ	EQUAL	O	OVERALL
&	AND	EQU	EQUIPMENT	O.A.	ON CENTER
AT	APPROXIMATELY	EW	ELECTRIC WATER COOLER	O.C.	OUTSIDE DIAMETER
CL	CENTERLINE	EX	EXISTING	O.F.	OWNER FURNISHED, CONTRACTOR INSTALLED
Ø	DIAMETER	EXT	EXTERIOR	O.F.I.	OWNER FURNISHED, OWNER INSTALLED
#	NUMBER	F.A.	FIRE ALARM	OFF	OFFICE
"	INCH(ES)	F.B.	FLAT BAR	OP	OPENING
'	FOOT (FEET)	F.D.	FLOOR DRAIN	OPP	OPPOSITE
∠	ANGLE	F.D.	FLOOR DRAIN	ORD	OVERFLOW ROOF DRAIN
⊥	PERPENDICULAR	FDN	FOUNDATION	Q	QUARRY TILE
PL	PLATE OR PROPERTY LINE	FE	FIRE EXTINGUISHER	Q.T.	QUARRY TILE
A	ACOUSTICAL	FEC	FIRE EXTINGUISHER CABINET	R	RISER
A.D.	AREA DRAIN	FHC	FIRE HOSE CABINET	(R)	RELLOCATE
ADJ	ADJUSTABLE	FIN	FINISH	RAD	RADIUS
AFF	ABOVE FINISH FLOOR	FL	FLOOR	RD	ROOF DRAIN
AGGR	AGGREGATE	F.O.C.	FACE OF CONCRETE	REF	REFERENCE
AL	ALUMINUM	F.O.F.	FACE OF FINISH	REFR	REFRIGERATOR
APPROX	APPROXIMATE	F.O.S.	FACE OF STUDS	RGTR	REGISTER
ARCH	ARCHITECTURAL	FPRF	FIREPROOF	REQ	REQUIRED
ASB	ASBESTOS	FT	FOOT OR FEET	RESIL	RESILIENT
ASPH	ASPHALT	FTG	FOOTING	RM	ROOM
B	BOARD	FURR	FURRING	R.O.	ROUGH OPENING
BD	BOARD	FUT	FUTURE	R.W.L.	RAIN WATER LEADER
BITUM	BITUMINOUS	G	GAUGE	S	SOUTH
BLDG	BUILDING	GA	GALVANIZED	S	SELF ADHERED MEMBRANE
BLK	BLOCK	GALV	GALVANIZED	SAM	SOLID CORE
BLKG	BLOCKING	GB	GRAB BAR	SC	SEAT COVER DISPENSOR
BM	BEAM	GL	GLASS	S.C.D	SCHEDULE
BOT	BOTTOM	GND	GROUND	S.D.	SOAP DISPENSER
BR	BUMPER RAIL	GR	GRADE	SECT	SECTION
C	CABINET	GYP	GYPSUM	SH	SHelf
CAB	CATCH BASIN	H	HOSE BIB	SH	SHOWER CURTAIN
CER	CERAMIC	H.B.	HOLLOW CORE	SHC	SHOWER
C.I.	CAST IRON	HC	HOLLOW CORE	SHT	SHEET
CG	CORNER GUARD	HDWD	HARDWOOD	SIM	SIMILAR
CGF	CORNER GUARD FULL HEIGHT	HM	HOLLOW METAL	S.N.D.	SANITARY NAPKIN DISPENSER
CHR	CHAIR RAIL	HR	HORIZONTAL	S.N.R.	SANITARY NAPKIN RECEPTACLE
CLG	CEILING	HR	HORIZONTAL	S.P.T.	SPECIMIN PASS THROUGH
CLKG	CAULKING	HR-E	HANDRAIL, EXISTING	SQ	SQUARE
CLO	CLOSET	HR-ME	HANDRAIL, MATCH EXISTING	S.T	STAINLESS STEEL
CLR	CLEAR	HR-1	HANDRAIL, NEW	S.SK	SERVICE SINK
C.O.	CASED OPENING	HGT	HEIGHT	STA	STATION
COL	COLUMN	I	INSIDE DIAMETER	STD	STANDARD
CONC	CONCRETE	I.D.	INSIDE DIAMETER	STL	STEEL
CONIN	CONNECTION	INSUL	INSULATION	STRUCT	STRUCTURAL
CONSTR	CONSTRUCTION	INT	INTERIOR	SUSP	SUSPENDED
CONT	CONTINUOUS	J	JANITOR	SYM	SYMMETRICAL
CORR	CORRIDOR	JAN	JANITOR	I	TREAD
CTSK	COUNTERSUNK	JT	JOINT	T.B.	TOWEL BAR
CNTR	COUNTER	K	KITCHEN	T.C.	TOP OF CURB
D	DOUBLE	L	LABORATORY	TEL	TELEPHONE
DBL	DEPARTMENT	LAB	LABORATORY	T&G	TONGUE AND GROOVE
DEPT	DEPARTMENT	LAM	LAMINATE	THK	THICK
D.F.	DRINKING FOUNTAIN	LAV	LAVATORY	T.P.	TOP OF PAVEMENT
DET	DETAIL	LT	LIGHT	T.P.D.	TOILET PAPER DISPENSER
DIA	DIAMETER	M	MAXIMUM	TV	TELEVISION
DIM	DIMENSION	M.C.	MEDICINE CABINET	T.W.	TOP OF WALL
DISP	DISPENSER	M.ECH	MECHANICAL	TYP	TYPICAL
DN	DOWN	MEMB	MEMBRANE	U	UNDERWRITERS LABORATORY
D.O.	DOOR OPENING	MET	METAL	UL	UNFINISHED
DR	DOOR	MFR	MANUFACTURER	UNF	UNFINISHED
DWR	DRAWER	M.H.	MANHOLE	UR	URINAL
DS	DOWNSPOUT	MIN	MINIMUM	V	VERTICAL
D.S.P.	DRY STANDPIPE	MIR	MIRROR	VEST	VESTIBULE
DWG	DRAWING	MISC	MISCELLANEOUS	W	WEST
E	EAST	M.O.	MASONRY OPENING	W	WITH
(E)	EXISTING	MTD	MOUNTED	W.C.	WATER CLOSET
EJ	EXPANSION JOINT	MUL	MULLION	W	WOOD
EL	ELEVATION	N	NORTH	W/O	WITHOUT
ELEC	ELECTRICAL	(N)	NEW	W	WATERPROOF
ELEV	ELEVATOR	N.I.C.	NOT IN CONTRACT	WPR	WALL PROTECTION
EMER	EMERGENCY	NO.	NUMBER	WRB	WEATHER RESISTANT BARRIER
ENCL	ENCLOSURE	NOM	NOMINAL	W	WAINSCOT
EP	ELECTRICAL PANEL	NTS	NOT TO SCALE	WT	WEIGHT

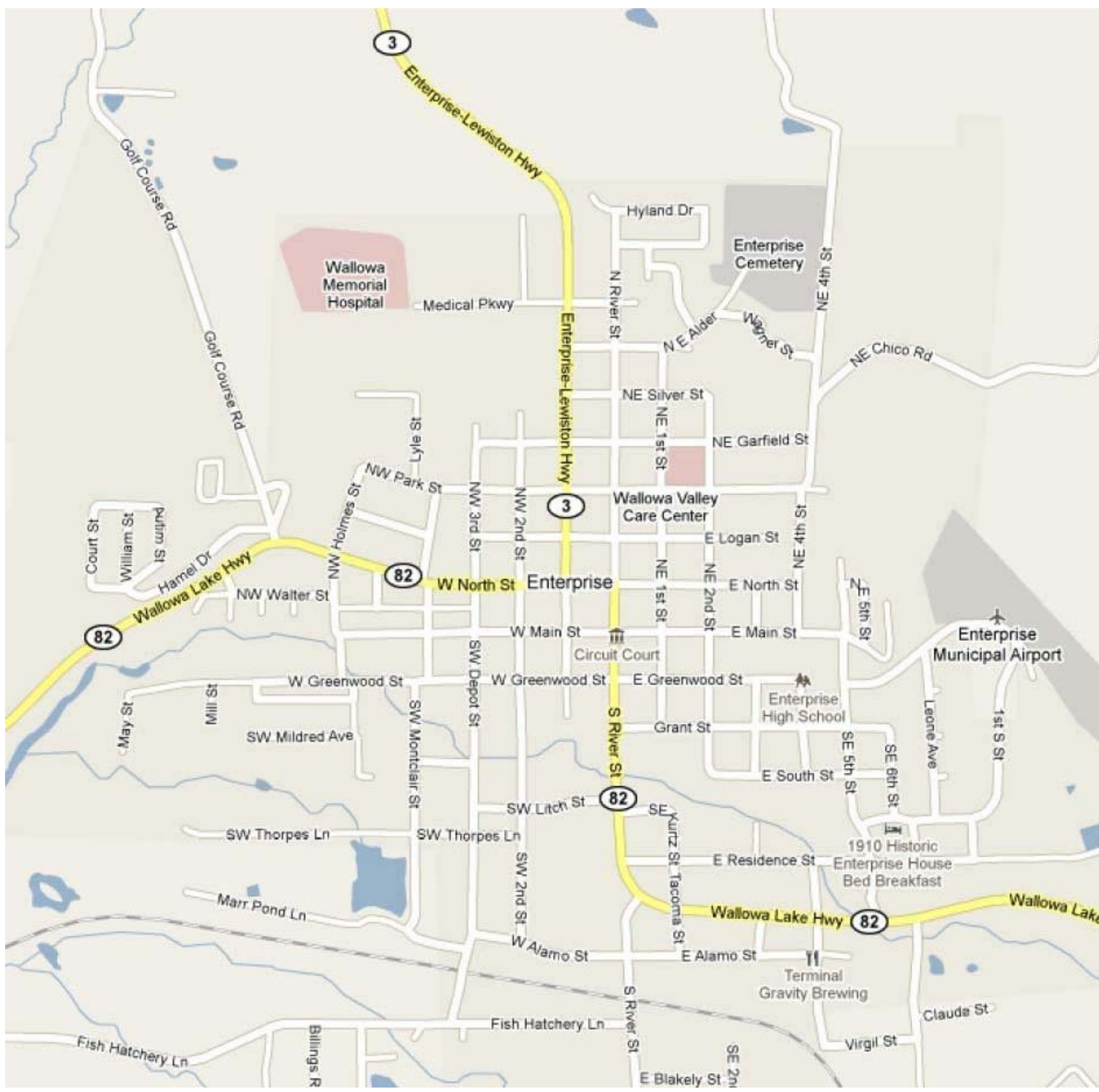
#### PROJECT CONTACTS

<b>Owner:</b>	<b>Wallowa Memorial Hospital</b> 601 Medical Parkway Enterprise, OR 97828 TEL: (541) 426-5400 FAX: (541) 426-0321 ATTN: Dan McCarthy, Plant Services Director EMAIL: dan.mccarthy@wchcd.org	<b>Civil:</b>	<b>Anderson Perry &amp; Associates, Inc.</b> 1901 N. Fir St. La Grande, OR 97850 TEL: (541) 963-8309 FAX: (541) 963-5456 ATTN: Brad Baird, PE/ President EMAIL: dbaird@andersonperry.com
<b>Architect:</b>	<b>Clark/Kjos Architects</b> 333 NW Fifth Avenue Portland, OR 97209 TEL: (503) 224-4848 FAX: (503) 224-7116 ATTN: Erin Couch, Project Manager EMAIL: ErinCouch@ckarch.com	<b>Structural:</b>	<b>Lewis &amp; Van Vleet, Inc.</b> 18660 SW Boones Ferry Rd Tualatin, OR 97062 TEL: (503) 885-8605 FAX: (503) 885-1206 ATTN: Gary Lewis, Principal EMAIL: gljewis@lvvi.com
<b>Owner's Representative:</b>	<b>Marathon Development, Inc.</b> 12600 SE 38th St, Suite 210 Bellevue, WA 98006 TEL: (425) 233-6974 FAX: (425) 675-4599 ATTN: Troy Johnson EMAIL: troyjohnson@marathondev.com		
<b>General Contractor:</b>	<b>Andersen Construction, Co., Inc.</b> 6712 N Outer Circle Portland, OR 97217 TEL: (503) 283-6712 FAX: (503) 283-4393 ATTN: Jeff Sawyer, Project Manager EMAIL: jsawyer@andersen-const.com ATTN: Dave Drews, Superintendent EMAIL: ddrews@andersen-const.com		

#### GENERAL NOTES

- CONTRACTOR TO VERIFY ALL EXISTING CONDITIONS AND DIMENSIONS PRIOR TO PROCEEDING WITH THE WORK.
- DIMENSIONS TAKE PRECEDENCE OVER DRAWINGS. DO NOT SCALE DRAWINGS. NOTIFY THE ARCHITECT OF ANY DISCREPANCIES PRIOR TO PROCEEDING WITH THE WORK.
- CONTRACTOR IS RESPONSIBLE FOR CONSTRUCTION MEANS AND METHODS.
- CONTRACTOR IS RESPONSIBLE FOR VERIFICATION AND COORDINATION OF SUBCONTRACTOR'S WORK. COMPLIANCE WITH THE DRAWINGS AND SPECIFICATIONS, ACCURATE LOCATION OF STRUCTURAL MEMBERS, AND OPENINGS FOR MECHANICAL, ELECTRICAL, AND MISCELLANEOUS EQUIPMENT.
- CONTRACTOR SHALL VERIFY DIMENSIONS AND CLEARANCES FROM MANUFACTURER PRIOR TO THE CONSTRUCTION AND INSTALLATION OF ALL EQUIPMENT, FURNISHINGS, AND ACCESSORIES.
- CONTRACTOR IS RESPONSIBLE FOR THE COMPLETE SECURITY OF THE SITE DURING CONSTRUCTION AND UNTIL PROJECT COMPLETION.
- CONTRACTOR SHALL LOCATE AND PROTECT EXISTING UTILITIES, WHETHER INDICATED IN DRAWINGS OR NOT.
- PROVIDE BACKING, BLOCKING, OR STRAPPING AS REQUIRED FOR GRAB BARS, SHELVING, EQUIPMENT, HANDRAILS, ACCESSORIES, AND CABINETS.
- COORDINATE LOCATIONS OF IN-WALL ITEMS TO AVOID BACK TO BACK INSTALLATION.
- ALL SAFETY GLAZING SHALL BE PERMANENTLY LABELED WITH THE MANUFACTURER'S NAME AND TEST APPROVAL INFORMATION.
- SEE STRUCTURAL FOR REQUIRED SPECIAL INSPECTIONS.
- SEE MECHANICAL AND ELECTRICAL DRAWINGS FOR ADDITIONAL ELECTRICAL AND EQUIPMENT INFORMATION.

#### VICINITY MAP



#### -DRAWING LIST-

G000	GEN. NOTES, SYMBOL, ABBRE. & FINISH CODE
C200	GRADING PLAN
A0.00	SURCHARGE PLAN
S1.01	FOUNDATION PLAN

## Wallowa Memorial Hospital MOB

Wallowa County Health Care District

Enterprise, OR



ISSUE DATE: 03.18.11

REVISIONS:

GEN. NOTES,  
SYMBOL, ABBRE. &  
FINISH CODE

# G000

PROJECT NO.: 10009



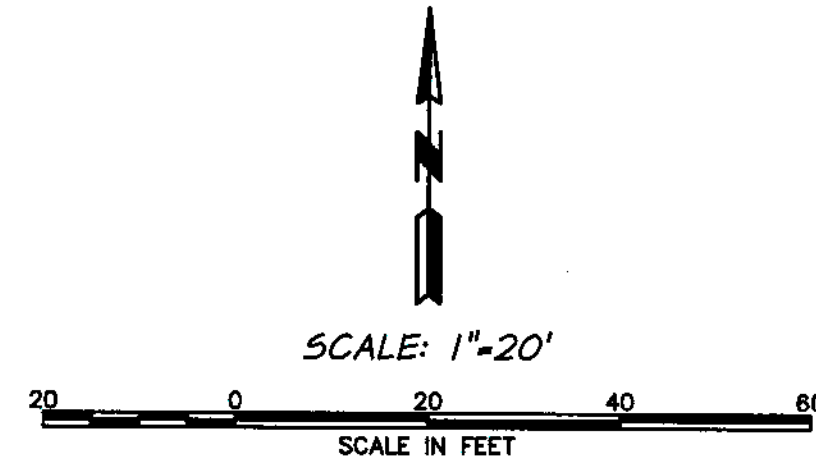
# LEGEND

FG SURFACE ELEVATION AT FINISHED GRADE  
 FL ELEVATION AT FLOW LINE  
 AP# ANGLE POINT NUMBER  
 RP# RADIUS POINT NUMBER

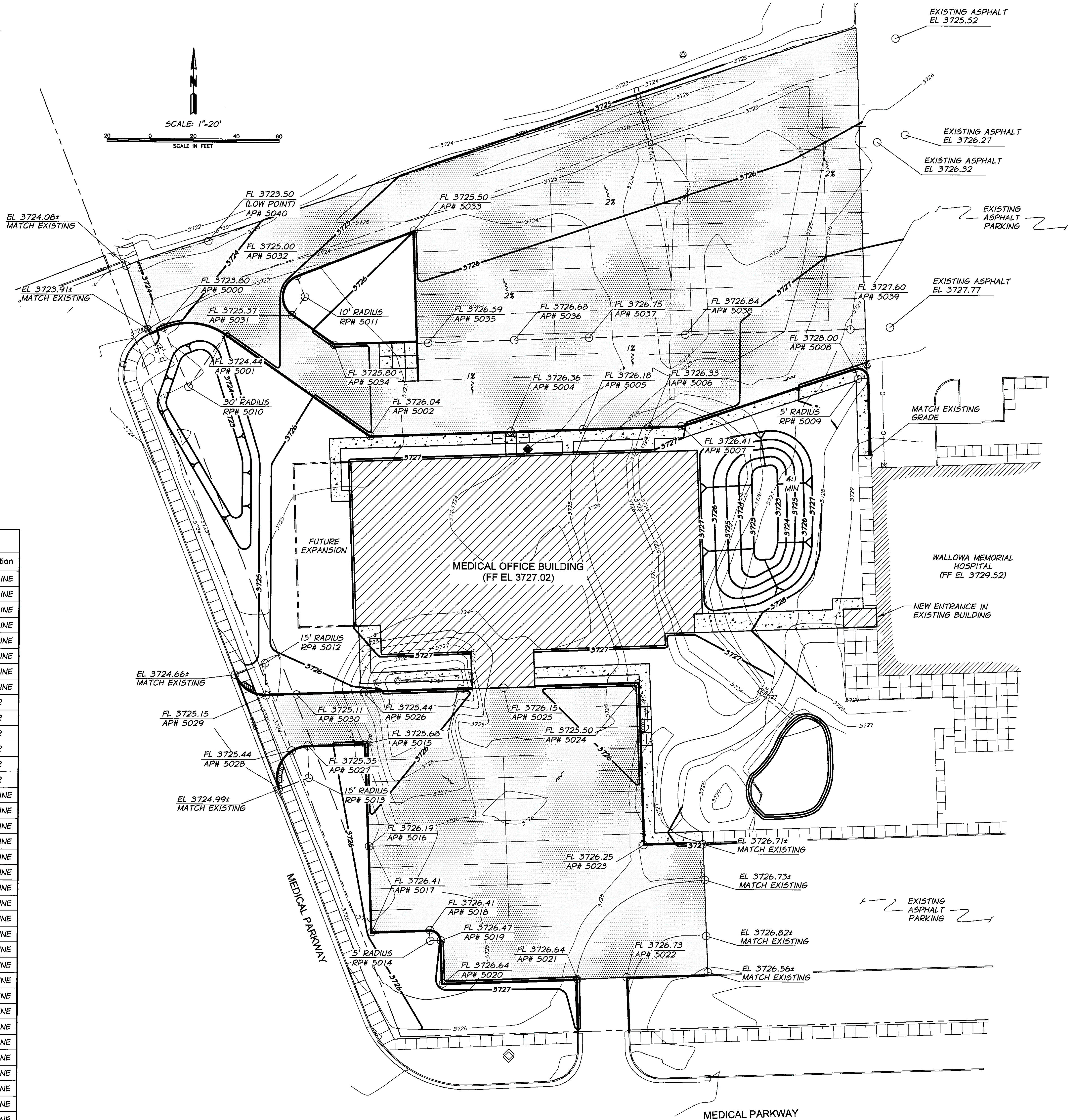
FL XXXX.XX SPOT ELEVATION  
 xx' RADIUS CURB RADIUS POINT

INDEX CONTOUR 3726  
 INTERMEDIATE CONTOUR 3726  
 PROPOSED CONTOUR 3726  
 CONTROL POINT

ASPHALT PAVEMENT  
 PC CONCRETE  
 LANDSCAPING  
 AREA LIGHTING  
 TREES



Point #	Elevation	Northing	Easting	Description
5000	3723.80	660259.60	9026807.99	FLOW LINE
5001	3724.44	660256.68	9026836.93	FLOW LINE
5002	3726.04	660209.55	9026904.77	FLOW LINE
5004	3726.36	660212.02	9026970.12	FLOW LINE
5005	3726.18	660213.29	9027003.80	FLOW LINE
5006	3726.33	660214.46	9027034.69	FLOW LINE
5007	3726.41	660215.03	9027049.82	FLOW LINE
5008	3728.00	660242.26	9027130.41	FLOW LINE
5009		660237.52	9027132.01	CNTR
5010		660232.04	9026819.83	CNTR
5011		660274.28	9026873.83	CNTR
5012		660103.42	9026856.32	CNTR
5013		660050.16	9026876.91	CNTR
5014		659974.42	9026934.03	CNTR
5015	3725.68	660066.17	9026903.38	FLOW LINE
5016	3726.19	660014.87	9026905.31	FLOW LINE
5017	3726.41	659978.40	9026906.68	FLOW LINE
5018	3726.41	659979.41	9026933.53	FLOW LINE
5019	3726.47	659974.61	9026939.03	FLOW LINE
5020	3726.64	659954.61	9026939.78	FLOW LINE
5021	3726.64	659956.98	9027002.61	FLOW LINE
5022	3726.73	659958.00	9027025.74	FLOW LINE
5023	3726.25	660019.69	9027033.39	FLOW LINE
5024	3725.50	660094.99	9027030.55	FLOW LINE
5025	3726.15	660092.61	9026967.57	FLOW LINE
5026	3725.44	660090.15	9026902.47	FLOW LINE
5027	3725.35	660065.15	9026876.34	FLOW LINE
5028	3725.44	660062.88	9026868.96	FLOW LINE
5029	3725.15	660088.43	9026856.89	FLOW LINE
5030	3725.11	660088.97	9026871.09	FLOW LINE
5031	3725.37	660265.65	9026867.84	FLOW LINE
5032	3725.00	660284.06	9026870.00	FLOW LINE
5033	3725.50	660305.37	9026924.50	FLOW LINE
5034	3725.80	660251.94	9026887.58	FLOW LINE
5035	3726.59	660253.09	9026931.48	FLOW LINE
5036	3726.68	660254.60	9026971.45	FLOW LINE
5037	3726.75	660255.92	9027006.42	FLOW LINE
5038	3726.84	660257.62	9027051.39	FLOW LINE
5039	3727.60	660260.52	9027128.33	FLOW LINE
5040	3723.50	660300.00	9026828.57	LOW POINT

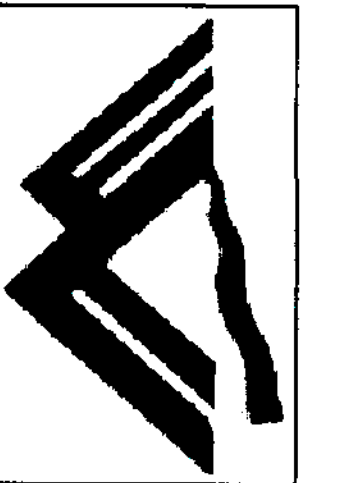


NOTE:  
 GRADING PLAN FOR SURCHARGE  
 PERMIT SUBMITTAL ONLY.  
 NOT FOR CONSTRUCTION.



anderson  
 perry  
 & associates, inc.  
 engineering - surveying - natural resources  
 1801 N. FIR STREET  
 Phone: 541/583-5305  
 Fax: 541/583-5456  
 La Grande, OR 97250

Wallowa Memorial Hospital MOB  
 Wallowa County Health Care District  
 Enterprise, OR



ISSUE DATE: 03.17.11  
 REVISIONS:

GRADING PLAN

C2.00

PROJECT NO.: 10009





**C L A R K**  **A R C H I T E C T S, L L C**

333 NW 5th Ave.  
Portland, OR 97209  
Phone: 503/224-4848  
Fax: 503/224-4848

Wallowa County Health Care District  
Enterprise, OR



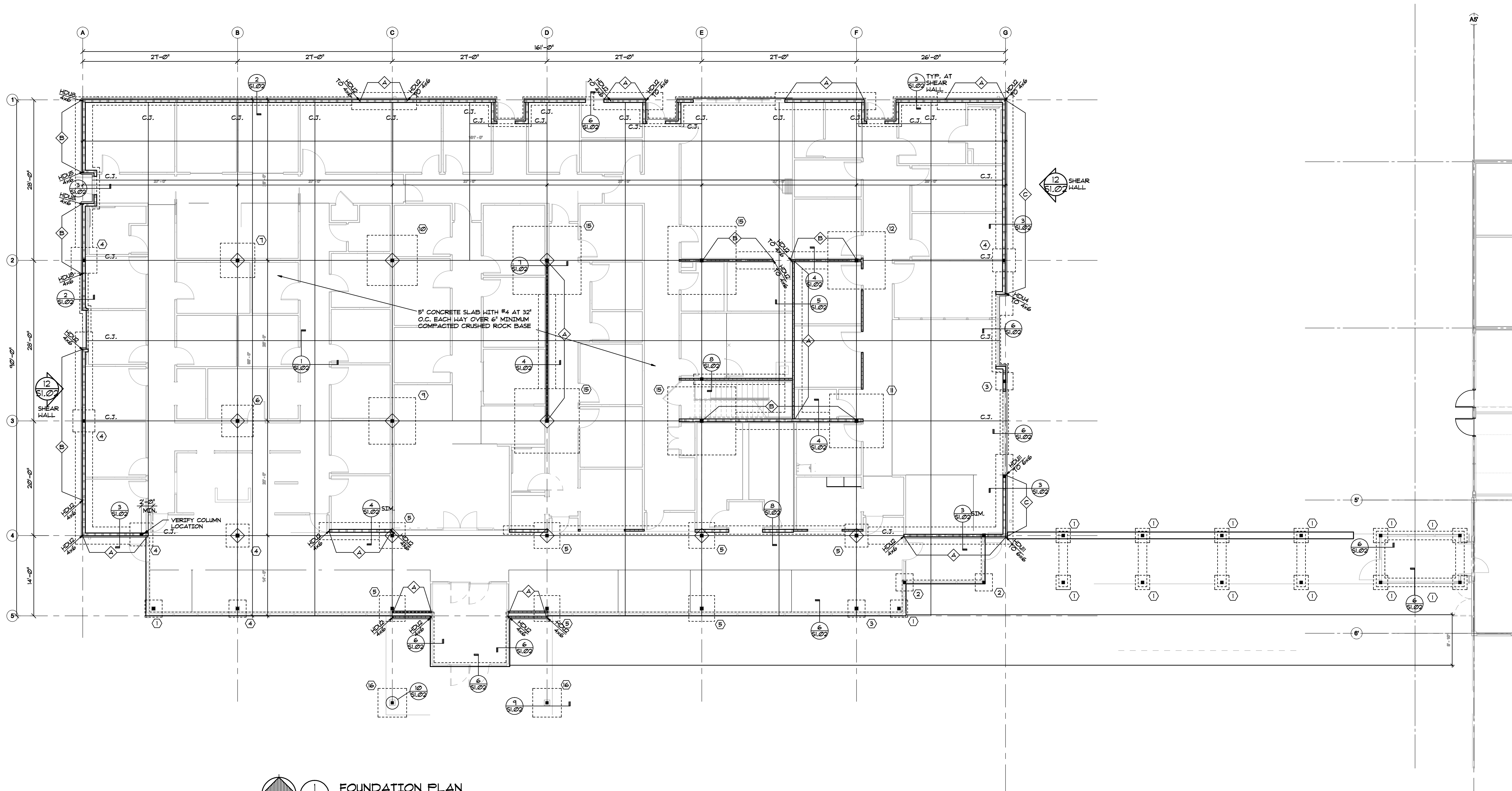
# SURCHARGE SITE PLAN

**A0.00**

PROJECT NO.: 10009

100% Design Development





FOUNDATION PLAN

NOTES

- 1) VERIFY ALL SLAB SLOPES, RECESSES, BLOCKOUTS, ETC. WITH ARCH. DRAWINGS.
- 2) VERIFY ALL DIMENSIONS WITH ARCH. DRAWINGS. SEE ARCH. DRAWINGS FOR ADDITIONAL DIMENSIONS.
- 3) TWO PRELIMINARY LOADING OPTIONS PROVIDED: 25 PSF BASIC ROOF SNOW AND 45 PSF BASIC ROOF SNOW. SEE PLAN FOR ALTERNATE FOOTING SIZES FOR EACH SNOW LOAD OPTION. (25) OR (45) INDICATES SIZE FOR THAT OPTION.

LEGEND

- INDICATES COLUMN AND FOOTING TYPE - SEE SCHEDULE THIS SHEET
- SHEAR WALL TYPE - SEE SCHEDULE THIS SHEET
- C. J. CONTROL JOINT - SEE SCHEDULE THIS SHEET
- INDICATES HOLD-DOWN SIZE AND LOCATION- SEE SCHEDULE THIS SHEET

COLUMN / FOOTING SCHEDULE

MK.	COLUMN	FOOTING	REINFORCEMENT	REMARKS
1	HSS 5 X 5 X 3/16	2'-0" X 2'-0" X 12"	(2) #4 EACH WAY	
2	HSS 5 X 5 X 3/16	2'-6" X 2'-6" X 12"	(2) #4 EACH WAY	
3	HSS 5 X 5 X 3/16	3'-0" X 3'-0" X 12"	(3) #4 EACH WAY	
4	HSS 5 X 5 X 1/4	3'-6" X 3'-6" X 12"	(4) #4 EACH WAY	
5	HSS 5 X 5 X 1/4	4'-0" X 4'-0" X 12"	(5) #4 EACH WAY	
6	HSS 5 X 5 X 1/4	4'-6" X 4'-6" X 16"	(5) #4 EACH WAY	
7	HSS 5 X 5 X 5/16	5'-0" X 5'-0" X 16"	(5) #5 EACH WAY	
8	HSS 5 X 5 X 5/16	5'-6" X 5'-6" X 16"	(6) #5 EACH WAY	
9	HSS 5 X 5 X 3/8	6'-0" X 6'-0" X 18"	(6) #5 EACH WAY	
10	HSS 5 X 5 X 3/8	6'-6" X 6'-6" X 18"	(7) #5 EACH WAY	
11	HSS 5 X 5 X 1/2	7'-0" X 7'-0" X 20"	(7) #6 EACH WAY	
12	HSS 5 X 5 X 1/2	7'-6" X 7'-6" X 20"	(8) #6 EACH WAY	
13	HSS 6 X 6 X 3/8	8'-0" X 8'-0" X 22"	(8) #6 EACH WAY	
14	HSS 6 X 6 X 3/8	8'-6" X 8'-6" X 22"	(9) #6 EACH WAY	
15	HSS 6 X 6 X 1/2	9'-0" X 9'-0" X 24"	(9) #7 EACH WAY	
16		5'-0" X 5'-0" X 16"	(5) #5 EA. WAY TOP AND BOTTOM	

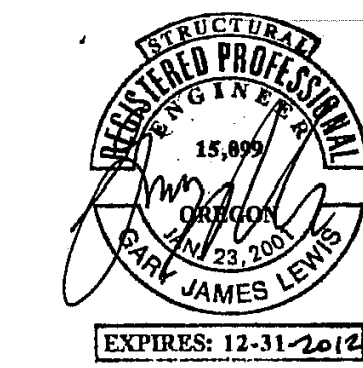
DESIGN SOIL PRESSURE = 15000 PSF DEAD PLUS LIVE LOAD  
SEE SOILS INVESTIGATION BY: FOSTER GAMBEE GEOTECHNICAL, PC

SHEAR WALL SCHEDULE

MK	SHEATHING AND NAILING	BASE CONNECTION		NOTES
		ANCHOR BOLTS	NAILS	
1	15/32" APA RATED STRUCT. 1 SHEATHING ONE SIDE ALL EDGES BLOCKED, WITH 10d NAILS AT 6" O.C. ALL PANEL EDGES AND 10d NAILS AT 12" O.C. FIELD.	3/4" DIA. AT 48" O.C.	(2) 16d AT 8" O.C.	
2	15/32" APA RATED STRUCT. 1 SHEATHING ONE SIDE, ALL EDGES BLOCKED, WITH 10d NAILS AT 4" O.C. ALL PANEL EDGES AND 10d AT 12" O.C. FIELD.	3/4" DIA. AT 32" O.C.	(2) 16d AT 4" O.C.	4, 6
3	15/32" APA RATED STRUCT. 1 SHEATHING ONE SIDE, ALL EDGES BLOCKED, WITH 10d NAILS AT 3" O.C. ALL PANEL EDGES AND 10d AT 12" O.C. FIELD.	3/4" DIA. AT 24" O.C.	(2) 16d AT 4" O.C.	4, 6

SHEAR WALL NOTES:

- 1) ALL EXTERIOR WOOD FRAME WALLS TO BE TYPE  $\Delta$  SHEAR WALLS UNLESS NOTED OTHERWISE.
- 2) INSTALL SHEATHING HORIZONTAL OR VERTICAL. ALL EDGES BLOCKED WITH 2X MINIMUM BLOCKING UNLESS NOTED OTHERWISE.
- 3) NAILS NOTED ARE COMMON OR BOX GALVANIZED. GALVANIZED NAILS TO BE HOT DIPPED OR TUMBLE. STAPLES ARE NOT AN ACCEPTABLE SUBSTITUTION.
- 4) FRAMING AT ADJOINING PANEL EDGES TO BE 3" NOMINAL AND NAILS SHALL BE STAGGERED.
- 5) PROVIDE 1/4" X 2 1/2" X 2 1/2" STEEL PLATE WASHERS BETWEEN THE SILL PLATE AND THE NUT ALL WALLS. LOCATE ANCHOR BOLT OR INCREASE WASHER SIZE FOR MAXIMUM 1/2" GAP BETWEEN EDGE OF WASHER AND EDGE OF SILL PLATE ON SHEATHED SIDE.
- 6) SILL PLATE TO BE SINGLE 3X NOMINAL MEMBER MINIMUM. (2) 20d BOX END NAILS SHALL BE SUBSTITUTED FOR (2) 16d BOX END NAILS.
- 7) SHEATHING TO OCCUR ON SYMBOL SIDE OF WALL (BOTH SIDES AT SHEAR WALLS  $\Delta$  &  $\Delta$ ).



Wallowa Memorial Hospital MOB

Wallowa County Health Care District  
Enterprise, OR



ISSUE DATE: 02.28.11

REVISIONS:

Grading Permit Drawing  
Not for Building Permit

FOUNDATION PLAN

S1.01

PROJECT NO.:

LEWIS & VAN VLEET INC.  
CONSULTING ENGINEERS  
18660 SW Boones Ferry Road  
Tualatin, Oregon 97062  
(503) 885-8605 phone  
(503) 885-1208 fax  
www.lvti.com  
Contact Project Engr.: BARRY LEWIS